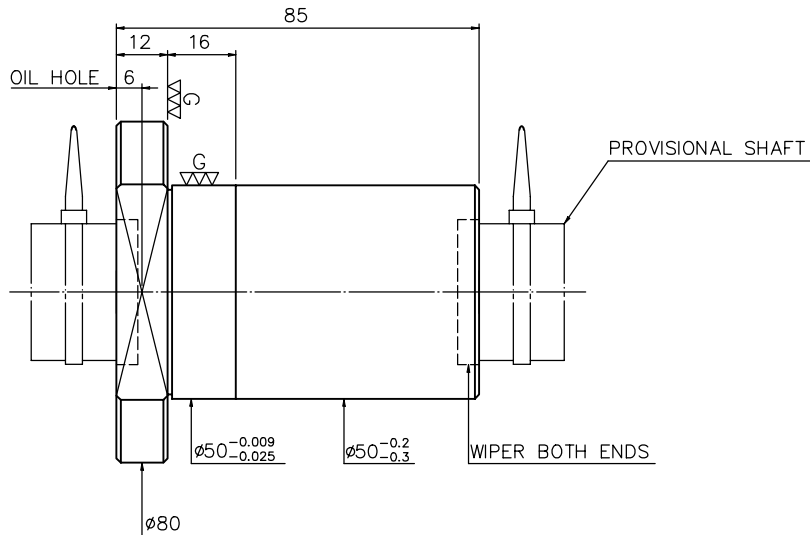
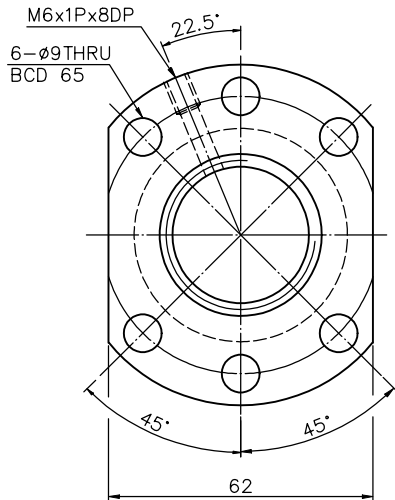


1  
A1158TA1

2  
Released by HIWIN design group.

3  
4  
5  
6  
7  
8  
9  
▽ (▽▽) <sup>G</sup>



PRELOAD(kgf)	_____
R.D	_____
S.F (kgf)	_____
DRAG TORQUE(kgf-cm)	_____
DIRECTION OF TURN	R.H
PC DIA.	34.26
BALL DIA.	6.35
BACKLASH	0.03MAX
CIRCUIT	4
LEAD ANGLE	5.31°
DYNAMIC (kgf)	2900
STATIC (kgf)	6404
LEAD	10

SPEC: R32-10T4-FS1

MAX. AXIAL LOAD(kgf)	LUBRICATION	
MAX. ROTATIONAL SPEED (rpm)	SPACE BALL	
DN VALUE	EI TYPE ASSEMBLY METHOD	
MAX. FEED RATE (m/min)	CUSTOMER DRAWING NO.	
ACCELERATION (m/sec <sup>2</sup> )	CUSTOMER MC TYPE	
SUPPORT METHOD	CUSTOMER AXIAL TYPE	

THREAD LENGTH 	UNCHAMFERED USE <input type="checkbox"/> R0.5 <input checked="" type="checkbox"/> R1 <input type="checkbox"/> R ROUNG M/C/FIN M/C/GI 25° 6.3° 0.4g ∇ ∇ ∇ ∇ ∇ ∇	SCALE 1: X MATAL SH: ROLLED DATE 2007.07.17 NT: SNCM220/SCM415 DWG JANET
E300: _____ *BREAK SHARP EDGE UNLESS OTHER SPECIFIED. *未畫倒角者以R0.5MAX ● THREAD END ALLOWS ABOVE LENGTH OUT OF HARDNESS TOLERANCE	UN TOL DIMN mm UP TO 6 30 120 300 600 1200 2400 2400 ±0.1 ±0.2 ±0.3 ±0.4 ±0.5 ±0.8 ±1.0 ±1.5	THREAD BALL TRACK APPD MICHELLE HRC 56 ~ 62 PROCESS NO. G
CUSTR H-CHICAGO DWG.NO. A1158TA1		HIWIN® BALLSCREWS

DATE	MODIFICATION	APPROVED

\* PLEASE IGNORE CHINESE CHARACTERS WHICH ARE FOR OUR REFERENCE ONLY.