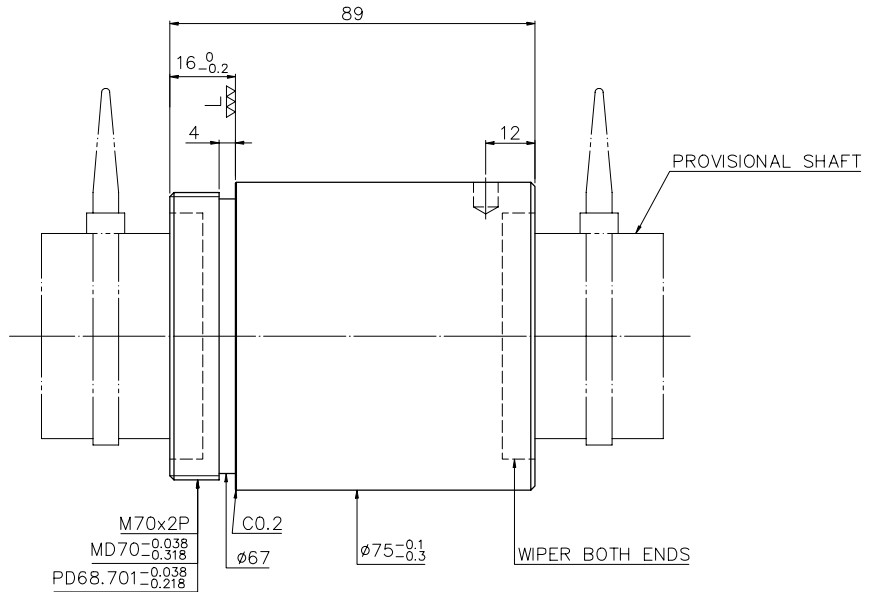
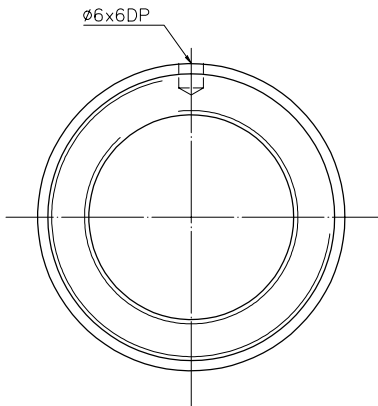


1
A11503A2

2
Released by HIWIN design group.

4
▽ (▽▽)

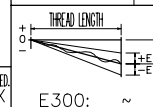
A
B
C
D
E
F
G



PRELOAD (kgf)	~
R.D	~
S.F (kgf)	~
DRAG TORQUE(kgf-cm)	~
DIRECTION OF TURN	R
PC DIA.	51.93
BALL DIA.	6.35
BACKLASH	0.03MAX
CIRCUIT	4
LEAD ANGLE	3.51
DYNAMIC (kgf)	3899
STATIC (kgf)	11112
LEAD	10

SPEC:R50-10T4-RS1

MAX. AXIAL LOAD (kgf)	LUBRICATION	SH: ROLLED	DATE	2007.07.16
MAX. ROTATIONAL SPEED (rpm)	SPACE BALL	INT: SNCM220/SCM415	DWG	JANET
DN. VALUE	EI TYPE ASSEMBLY METHOD	THRE	BALL TRACK	APPD Michelle
MAX. FEED RATE (m/min)	CUSTOMER DRAWING NO.	HRC	56 ~ 62	PROCESS NO. G
ACCELERATION (m/sec ²)	CUSTOMER MC TYPE	CUSTR	H-CHICAGO	
SUPPORT METHOD	CUSTOMER AXIAL TYPE	DWG.NO.	A11503A2	



UNCHAMFERED USE	□R0.5	■R1	□R	SCALE	1: X				
ROUGH M/C/FIN. M/C	▽	▽▽	▽▽▽	GRD	◎				
UNTOL	DIMN	mm							
UP	6	30	120	300	600	1200	2400	2400	OVER
TR	±0.1	±0.2	±0.3	±0.4	±0.5	±0.8	±1.0	±1.5	

*BREAK SHARP EDGE (UNLESS OTHER SPECIFIED)
*未量削角者以R0.5MAX
● THREAD END ALLOWS ABOVE LENGTH OUT OF HARDNESS TOLERANCE

2007.07.16	MOD. Δ	MICHELLE
DATE	MODIFICATION	APPROVED

* PLEASE IGNORE CHINESE CHARACTERS WHICH ARE FOR OUR REFERENCE ONLY.

HIWIN® BALLSCREWS