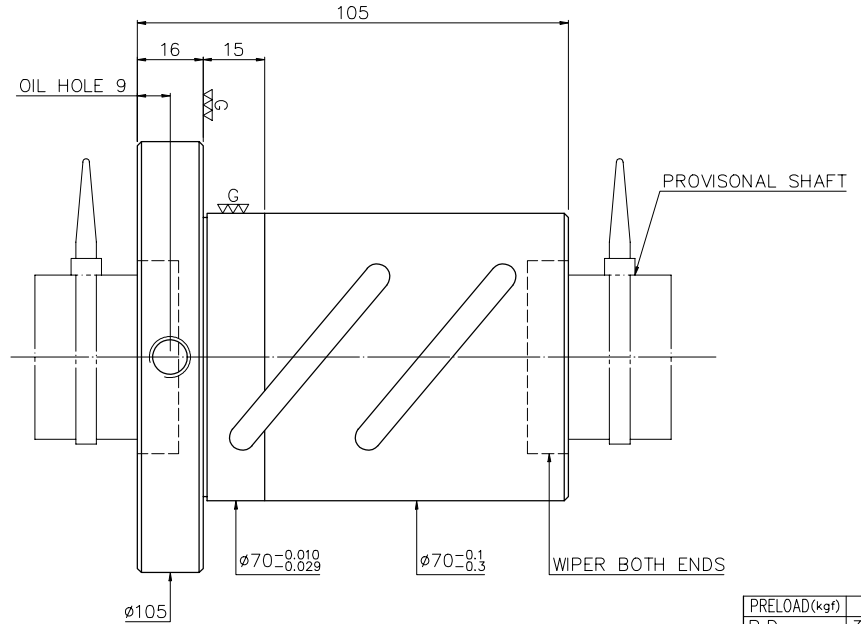
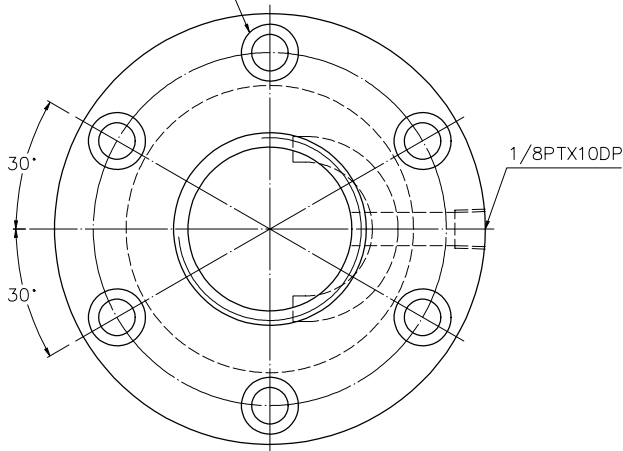


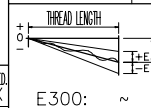
6- $\varnothing 9$ THRU $\varnothing 14 \times 8.5$ DP  
BCD 86



PRELOAD(kgf)	~
R.D	36.427
S.F (kgf)	~
DRAG TORQUE(kgf-cm)	~
DIRECTION OF TURN	R
PC DIA.	40.483
BALL DIA.	3.969
BACKLASH $\Delta$	0.03MAX
CIRCUIT	2.5*2
LEAD ANGLE	5.7
DYNAMIC (kgf)	2544
STATIC (kgf)	7967
LEAD /PITCH	12.7/6.35

SPEC: 2R40-12.7B2-FSB

MAX. AXIAL LOAD (kgf)		LUBRICATION		SH: ROLLED	DATE	2007.07.16
MAX. ROTATIONAL SPEED (rpm)		SPACE BALL		INT: SNOW220/SOM415	DWG	JANET
DN. VALUE		EI TYPE ASSEMBLY METHOD		THREAD BALL TRACK	APPD	MICHELLE
MAX. FEED RATE (m/min)		CUSTOMER DRAWING NO.		HRC 56 ~ 62	PROCESS NO.	G
ACCELERATION (m/sec <sup>2</sup> )		CUSTOMER MC TYPE		CUSTR	H-CHICAGO	
SUPPORT METHOD		CUSTOMER AXIAL TYPE		DWG.NO.	A114ZLA2	



UNCHAMFERED USE	<input type="checkbox"/> R0.5	<input checked="" type="checkbox"/> R1	<input type="checkbox"/> R
ROUGH M/C FINI. M/C	<input type="checkbox"/> 25 $\mu$	<input type="checkbox"/> 6.3 $\mu$	<input type="checkbox"/> 0.4 $\mu$
UNTOL. DIMN. mm	<input type="checkbox"/> $\nabla$	<input type="checkbox"/> $\nabla$	<input type="checkbox"/> $\nabla$
UP TO	6	30	120
TO	30	120	300
	120	300	600
	300	600	1200
	600	1200	2400
	1200	2400	OVER
	$\pm 0.1$	$\pm 0.2$	$\pm 0.3$
	$\pm 0.4$	$\pm 0.5$	$\pm 0.8$
	$\pm 1.0$	$\pm 1.5$	

MATERIAL	DATE	2007.07.16
THREAD BALL TRACK	DWG	JANET
HRC 56 ~ 62	APPD	MICHELLE
CUSTR	PROCESS NO.	G
DWG.NO.	A114ZLA2	

\*BREAK SHARP EDGE UNLESS OTHER SPECIFIED.  
\*未量倒角者以R0.5MAX  
● THREAD END ALLOWS ABOVE LENGTH OUT OF HARDNESS TOLERANCE

2007.07.16	MOD. $\Delta$	MICHELLE
DATE	MODIFICATION	APPROVED

\* PLEASE IGNORE CHINESE CHARACTERS WHICH ARE FOR OUR REFERENCE ONLY.

HIWIN BALLSCREWS