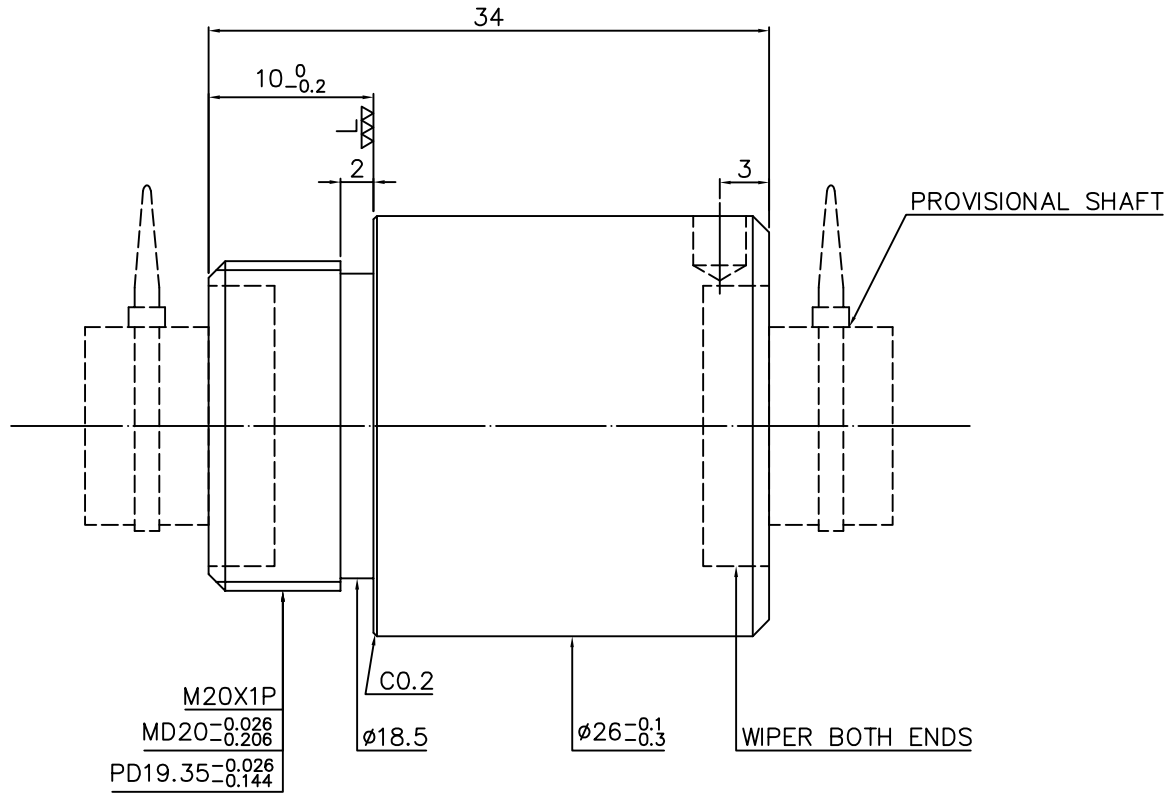
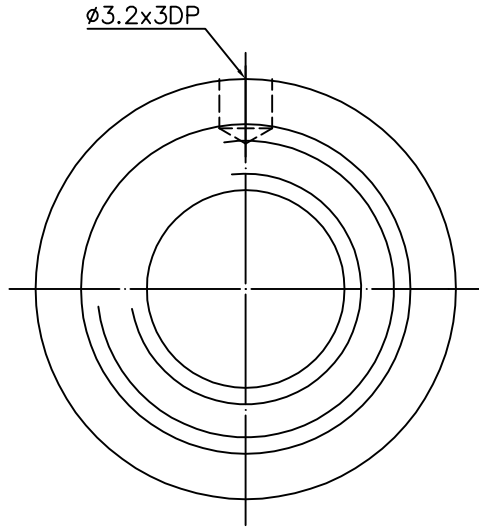


1 A114INB4

2 Released by HIWIN design group.

4 $\nabla \left(\frac{G}{\nabla \nabla} \right)$



M20X1P
 MD20^{-0.026}_{-0.206}
 PD19.35^{-0.026}_{-0.144}

C0.2
 ø18.5
 ø26^{-0.1}_{-0.3}
 WIPER BOTH ENDS

PRELOAD(kgf)	~
R.D	~
S.F (kgf)	~
DRAG TORQUE(kgf-cm)	~
DIRECTION OF TURN	R
PC DIA.	12.01

SPEC: R12-5T3-RSI

MAX. AXIAL LOAD(kgf)	LUBRCATION	BALL DIA.	2
MAX. ROTATIONAL SPEED (rpm)	SPACE BALL	BACKLASH Δ	0.03MAX
DN VALUE	EI TYPE ASSEMBLY METHOD	CIRCUIT	3
MAX. FEED RATE(m/min)	CUSTOMER DRAWING NO.	LEAD ANGLE	7.55
ACCELERATION (m/sec ²)	CUSTOMER MC TYPE	DYNAMIC (kgf)	265
SUPPORT METHOD	CUSTOMER AXIAL TYPE	STATIC (kgf)	461
		LEAD	5

UNCHAMFERED USE <input checked="" type="checkbox"/> R0.5 <input type="checkbox"/> R1 <input type="checkbox"/> R ROUGH M/C/FIN M/C GRD <input type="checkbox"/> <input type="checkbox"/> SCALE 1: X 25g ∇ 6.3g $\nabla \nabla$ 0.4g $\nabla \nabla \nabla$	SH: ROLLED DATE 2007.07.16 NT: SNCM220/SCM415 DWG JANET THREAD BALL TRACK APPD Michelle HRC 56 ~ 62 PROCESS NO. G
UNTOL DIMN mm UP TO 6 30 120 300 600 1200 2400 OVER ±0.1 ±0.2 ±0.3 ±0.4 ±0.5 ±0.8 ±1.0 ±1.5	CUSTR H-CHICAGO DWG.NO. A114INB4

*BREAK SHARP EDGE UNLESS OTHER SPECIFIED.
 *未畫倒角者以R0.5MAX
 ● THREAD END ALLOWS ABOVE LENGTH OUT OF HARDNESS TOLERANCE.

2007.07.16	MOD. Δ	Michelle
DATE	MODIFICATION	APPROVED

x
 * PLEASE IGNORE CHINESE CHARACTERS WHICH ARE FOR OUR REFERENCE ONLY.