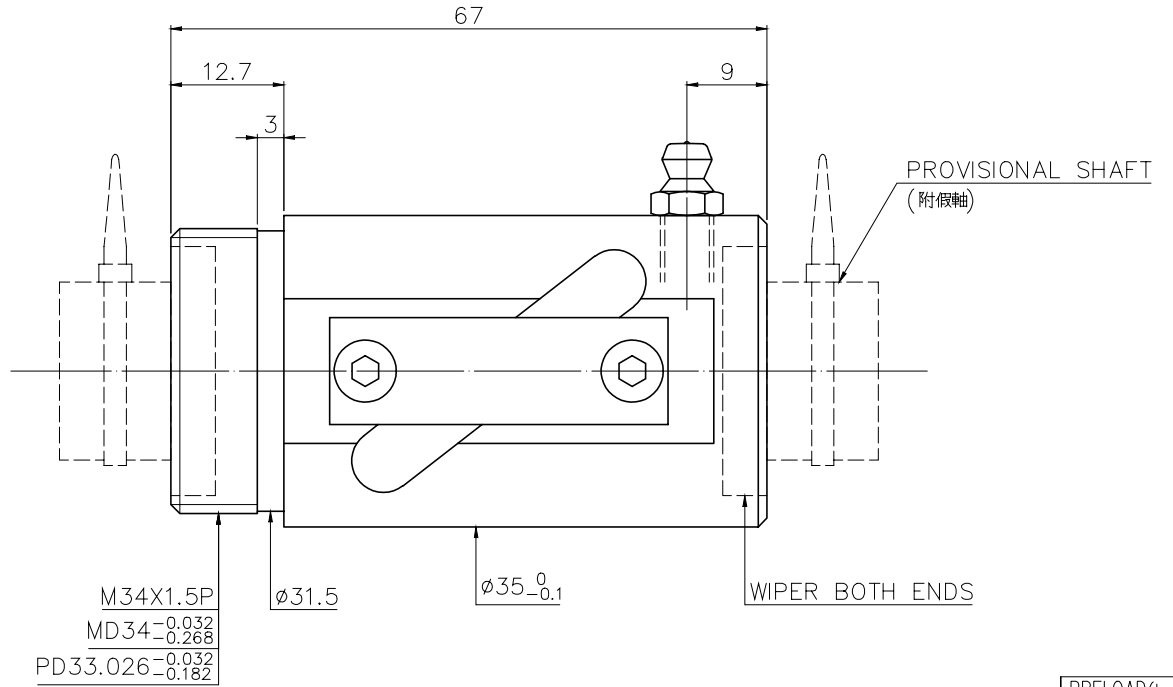
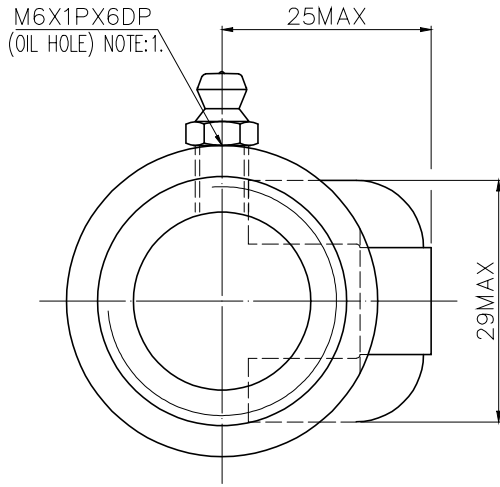


1
A11453A2

2 Released by HIWIN design group.

3
4
5
6
7
8
9
▽ (▽▽)



SPEC: R20-10B1-RSV

MAX. AXIAL LOAD (kgf)	LUBRICATION	PRELOAD(kgf)	~
MAX. ROTATIONAL SPEED (rpm)	SPACE BALL	R.D.	~
DN VALUE	E1 TYPE ASSEMBLY METHOD	S.F. (kgf)	~
MAX. FEED RATE (m/min)	CUSTOMER DRAWING NO.	DRAG TORQUE(kgf-cm)	~
ACCELERATION (m/sec ²)	CUSTOMER MC TYPE	DIRECTION OF TURN	R
SUPPORT METHOD	CUSTOMER AXIAL TYPE	P.C. DIA.	20.85
		BALL DIA.	4.763
		BACKLASH Δ	0.03MAX
		CIRCUIT	2.5*1
		LEAD ANGLE	8.68
		DYNAMIC Δ (kgf)	1280
		STATIC Δ (kgf)	2314
		LEAD	10

	UNCHAMFERED USE <input type="checkbox"/> R0.5 <input checked="" type="checkbox"/> R1 <input type="checkbox"/> R SCALE 1: X	MAT. SH: ROLLED DATE 2008.10.15 NT: SNCM220/Equivalent DWG Penny
	THREAD BALL TRACK APPD Michelle HRC 56 ~ 62 PROCESS NO. G	CUSTR H-CHICAGO DWG.NO. A11453A2

*BREAK SHARP EDGE UNLESS OTHER SPECIFIED.
*未畫倒角者以R0.5MAX

● THREAD END ALLOWS ABOVE LENGTH OUT OF HARDNESS TOLERANCE.

2008.10.15	MOD. Δ ~ Δ	Michelle
DATE	MODIFICATION	APPROVED

* PLEASE IGNORE CHINESE CHARACTERS WHICH ARE FOR OUR REFERENCE ONLY.

HIWIN® BALLSCREWS