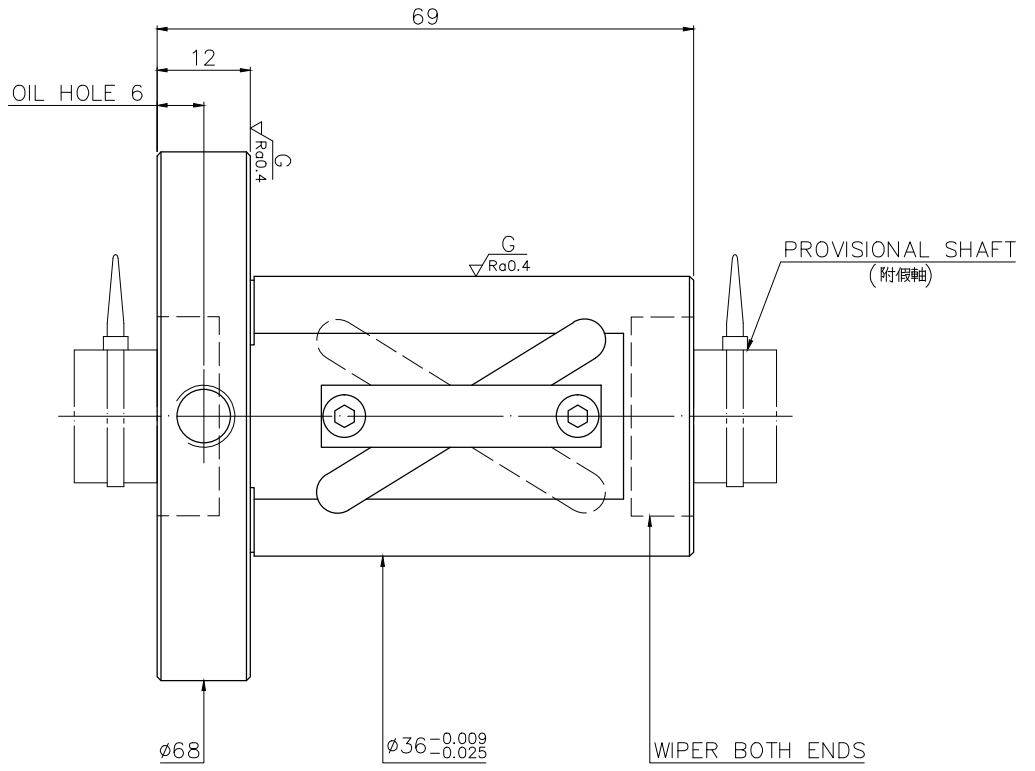
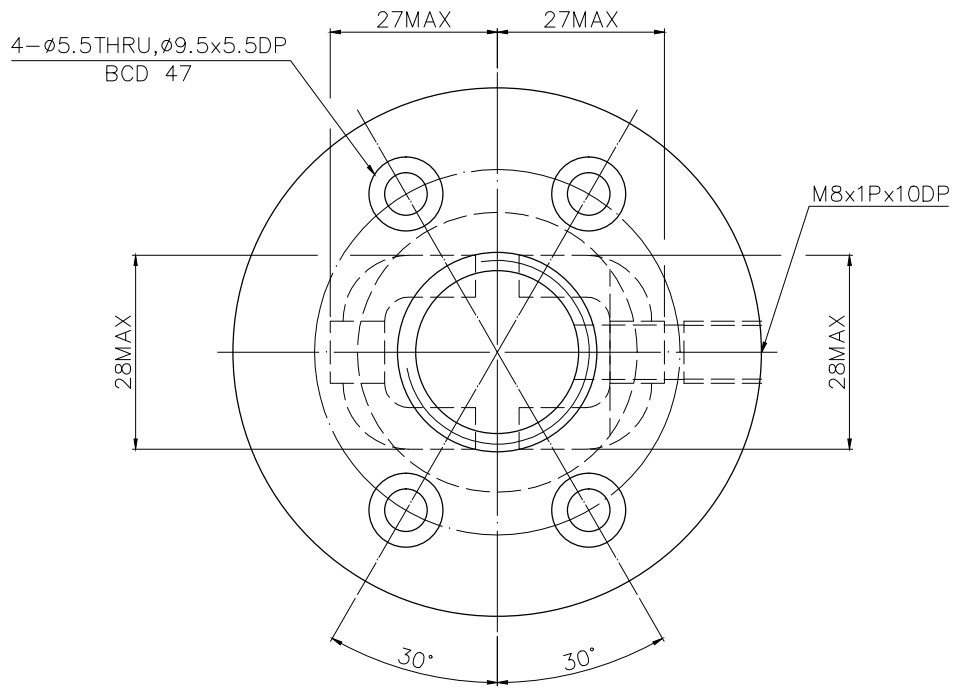


A10SKUA3

More Confidential

$\sqrt{Ra6.3}$ ($\sqrt{Ra0.4}$)

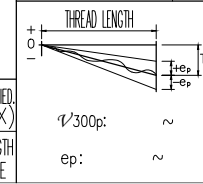
A
B
C
D
E
F
G



PRELOAD(kgf)	~
R.D.	~
S.F. (kgf)	~
DRAG TORQUE(kgf-cm)	~
DIRECTION OF TURN	R
P.C. DIA.	20.36
BALL DIA.	3.175
BACKLASH	0.04MAX
CIRCUIT	1.5*2
LEAD ANGLE	17.36
DYNAMIC (kgf)	792
STATIC (kgf)	1744
LEAD/PITCH	20/10

Δ
SPEC: 4R20-20A2-DFSV

MAX. AXIAL LOAD (kgf)		LUBRICATION		BALL DIA.	3.175
MAX. ROTATIONAL SPEED (rpm)		SPACE BALL		BACKLASH	0.04MAX
DN VALUE		E1 TYPE ASSEMBLY METHOD		CIRCUIT	1.5*2
MAX. FEED RATE (m/min)		CUSTOMER DRAWING NO.		LEAD ANGLE	17.36
ACCELERATION (m/sec ²)		CUSTOMER MC TYPE		DYNAMIC (kgf)	792
SUPPORT METHOD		CUSTOMER AXIAL TYPE		STATIC (kgf)	1744
				LEAD/PITCH	20/10



UNCHAMFERED USE	<input checked="" type="checkbox"/> C0.5	<input type="checkbox"/> C1	<input type="checkbox"/> C					
ROUGH M/C	FIN M/C	GRD	SCALE					
$\sqrt{Ra25}$	$\sqrt{Ra6.3}$	$\sqrt{Ra0.4}$	1: X					
NORMAL TOLERANCE mm								
UP TO	6	30	120	300	600	1200	2400	OVER
	± 0.1	± 0.2	± 0.3	± 0.4	± 0.5	± 0.8	± 1.0	± 1.5

MAT.	SH-ROLLED	DATE	2019.06.20
	INT:SNM220/Equivalent	DWG	Sandy
THREAD BALL TRACK	CHK	Sting	
HRC	56 ~ 62	APPD	Michelle
CUSTR	H-CHICAGO		
DWG.NO.	A10SKUA3		

*BREAK SHARP EDGE UNLESS OTHER SPECIFIED.
*未量倒角者去毛邊 (CO.2MAX)

THREAD END ALLOWS ABOVE LENGTH OUT OF HARDNESS TOLERANCE

HIWIN BALLSCREWS

2019.06.20	MOD.	Δ ~ Δ	Michelle
DATE	MODIFICATION	APPROVED	

* PLEASE IGNORE CHINESE CHARACTERS WHICH ARE FOR OUR REFERENCE ONLY.