

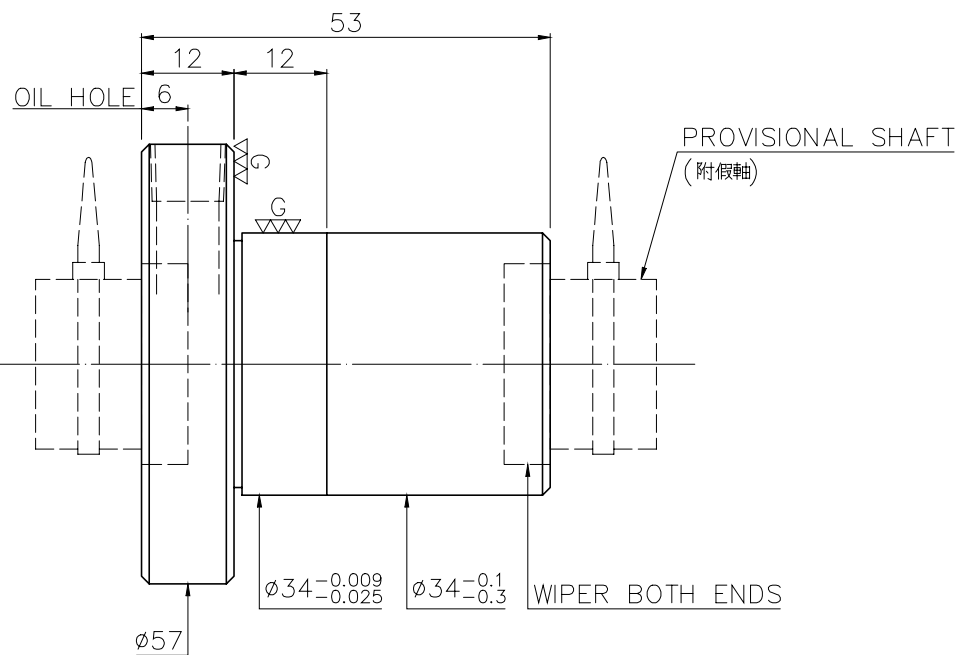
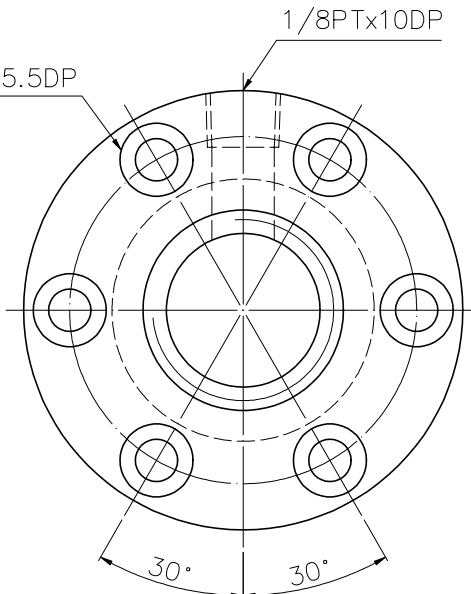
1 A10SKSA2

2 Released by HIWIN design group.

3 4 $\nabla\nabla (\overset{G}{\nabla\nabla})$

A
B
C
D
E
F
G

6- ϕ 5.5 THRU, ϕ 9.5x5.5DP
BCD 45



\triangle	PRELOAD(kgf)	~
	R.D.	~
\triangle	S.F. (kgf)	~
\triangle	DRAG TORQUE(kgf-cm)	~
	DIRECTION OF TURN	R
	P.C. DIA.	20.2
	BALL DIA.	3.175
	BACKLASH	\triangle 0.03MAX
	CIRCUIT	4
	LEAD ANGLE	4.58
	DYNAMIC (kgf)	938
	STATIC (kgf)	1993
	LEAD	5.08

SPEC:R20-5.08T4-FS1

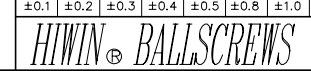
MAX. AXIAL LOAD(kgf)	LUBRICATION	SPACE BALL
MAX. ROTATIONAL SPEED (rpm)	E1 TYPE ASSEMBLY METHOD	CIRCUIT
DN VALUE	CUSTOMER DRAWING NO.	LEAD ANGLE
MAX. FEED RATE (m/min)	CUSTOMER MC TYPE	DYNAMIC (kgf)
ACCELERATION (m/sec ²)	CUSTOMER AXIAL TYPE	STATIC (kgf)
SUPPORT METHOD		LEAD

UNCHAMFERED USE <input type="checkbox"/> R0.5 <input checked="" type="checkbox"/> R1 <input type="checkbox"/> R ROUGH M/C FIN M/C GRD SCALE ∇ 25a ∇ 6.3a ∇ 0.4g ∇ 1: X VV VV VV VV NORMAL TOLERANCE mm UP 6 30 120 300 600 1200 2400 OVER TO ±0.1 ±0.2 ±0.3 ±0.4 ±0.5 ±0.8 ±1.0 ±1.5	MAT. SH:ROLLED DATE 2008.10.15
	NT:SNCM220/Equivalent DWG Penny
THREAD BALL TRACK APPD Michelle HRC 56 ~ 62 PROCESS NO. G	

2008.10.15	MOD.	\triangle Michelle
DATE	MODIFICATION	APPROVED

* PLEASE IGNORE CHINESE CHARACTERS WHICH ARE FOR OUR REFERENCE ONLY.

*BREAK SHARP EDGE UNLESS OTHER SPECIFIED.
 *未畫倒角者以R0.5MAX
 ● THREAD END ALLOWS ABOVE LENGTH OUT OF HARDNESS TOLERANCE



CUSTOMER: H-CHICAGO
 DWG.NO: A10SKSA2