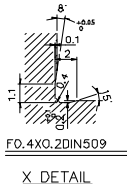
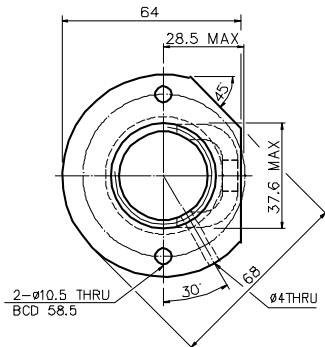
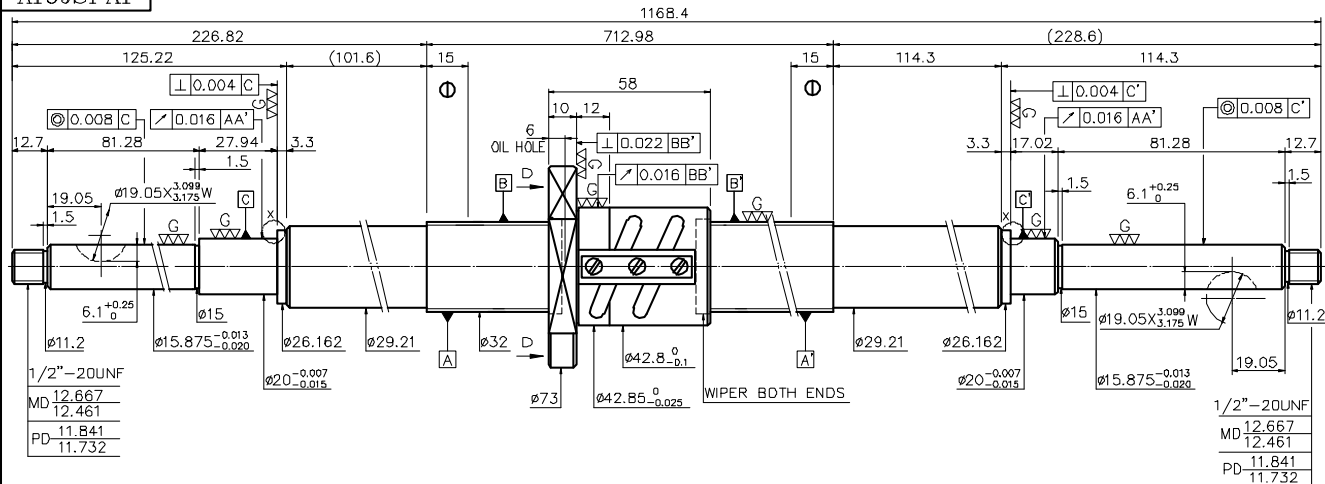
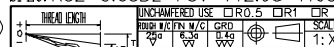


A10JSFA1



1. MAX AXIAL LOAD: _____ kgf
2. MAX BALLSCREW ROTATIONAL SPEED: _____ rpm
- DN VALUE: _____
- ACCELERATION = _____ m/sec²
3. MAX FEED RATE: _____ m/min

SPEC: R32-5.08B2-FSV-712.98-1168.4-0-012



PRELOAD(kg)	207
R.D	29.324
S.F (kgf)	0.65~1.92
DIN6 TORQUE(N-m)	1.88~5.64
LUBRICATION	
DIRECTION OF TURN	R.H
PC DIA.	32.6
BALL DIA.	3.175
BACKLASH	0
CIRCUIT	2.5*2
LEAD ANGLE	2.84°
DYNAMIC (kgf)	1886
STATIC (kgf)	5666
LEAD	5.08

* BREAK SHARP EDGE UNLESS OTHER SPECIFIED	CUSTOMER DRAWING NO.
* 未磨角時務必RO.SMAX	
THREAD END ALWAYS ABOVE LENGTH	UNC TYPE
OUT OF HARDNESS TOLERANCE	HAZ THK

T: -0.021	3J00: 0.012
E: 0.018	e: 0.016

UNCHAMFERED USE	<input type="checkbox"/> R0.5	<input type="checkbox"/> DR1	<input type="checkbox"/> DR
SCALE	1: X		
UNIT	mm		
DIN	16 18 30 120 300 600 1200 2400		
ISO	16 18 30 120 300 600 1200 2400		
ISO	16 18 30 120 300 600 1200 2400		

MATERIAL	SH: 50CrMo4	DATE	11.29.01
	INT: SNCM220	DWG	255000
THREAD BALL TRACK	APPD		
HRC	58 ~ 62	PROCESS	NO. GLE
CUSTOMER	HIWIN STD.		
DWG NO.	A10JSFA1		

* PLEASE IGNORE CHINESE CHARACTERS WHICH ARE FOR OUR REFERENCE ONLY

D-D VIEW

DATE MODIFICATION APPROVED