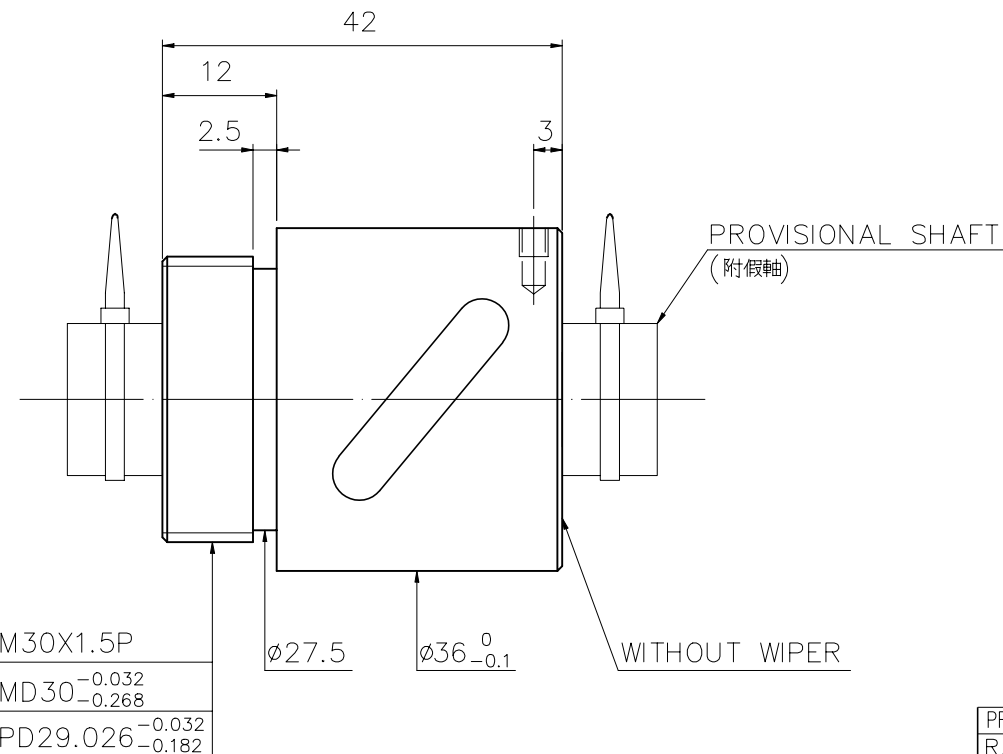
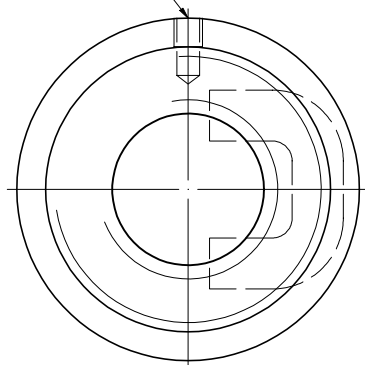


1 A10JJFA3

2 Released by HIWIN design group.

3  $\nabla$  ( $\nabla$ )

M3x0.5Px3DP



PRELOAD(kgf)	~
R.D.	~
S.F. (kgf)	~
DRAG TORQUE(kgf-cm)	~
DIRECTION OF TURN	R
P.C. DIA.	16.175
BALL DIA.	3.175
BACKLASH $\Delta$	0.03MAX
CIRCUIT	2.5*1
LEAD ANGLE	5.62°
DYNAMIC (kgf)	679
STATIC (kgf)	1226
LEAD	5

SPEC:R16-5B1-RSB

MAX. AXIAL LOAD(kgf)		LUBRICATION		SCALE	
MAX. ROTATIONAL SPEED (rpm)		SPACE BALL		1: X	
DN VALUE		E1 TYPE ASSEMBLY METHOD			
MAX. FEED RATE (m/min)		CUSTOMER DRAWING NO.			
ACCELERATION (m/sec <sup>2</sup> )		CUSTOMER MC TYPE			
SUPPORT METHOD		CUSTOMER AXIAL TYPE			

	UNCHAMFERED USE	<input checked="" type="checkbox"/> R0.5	<input type="checkbox"/> R1	<input type="checkbox"/> R	SCALE	MAT.	SH: ROLLED	DATE	2008.10.15
	ROUGH M/C	FIN M/C	M/C	GRD			1: X	NT: SNCM220/Equivalent	DWG
	25°	6.3°	0.4g	0.4g			THREAD BALL TRACK	APPD	Michelle
	$\nabla$	$\nabla$	$\nabla$	$\nabla$			HRC 56 ~ 62	PROCESS NO.	G
	NORMAL TOLERANCE mm						CUSTR	$\Delta$ H-CHICAGO	
	UP	6	30	120	300	500	1600	1200	2400
	TO	±0.1	±0.2	±0.3	±0.4	±0.5	±0.8	±1.0	±1.5
		1/300p: ~						DWG.NO.	A10JJFA3
		ep: ~							

\*BREAK SHARP EDGE UNLESS OTHER SPECIFIED.  
\*未畫倒角者以R0.5MAX

THREAD END ALLOWS ABOVE LENGTH OUT OF HARDNESS TOLERANCE

2008.10.15	MOD. $\Delta$ $\sim$ $\Delta$	Michelle
DATE	MODIFICATION	APPROVED

\* PLEASE IGNORE CHINESE CHARACTERS WHICH ARE FOR OUR REFERENCE ONLY.

HIWIN BALLSCREWS