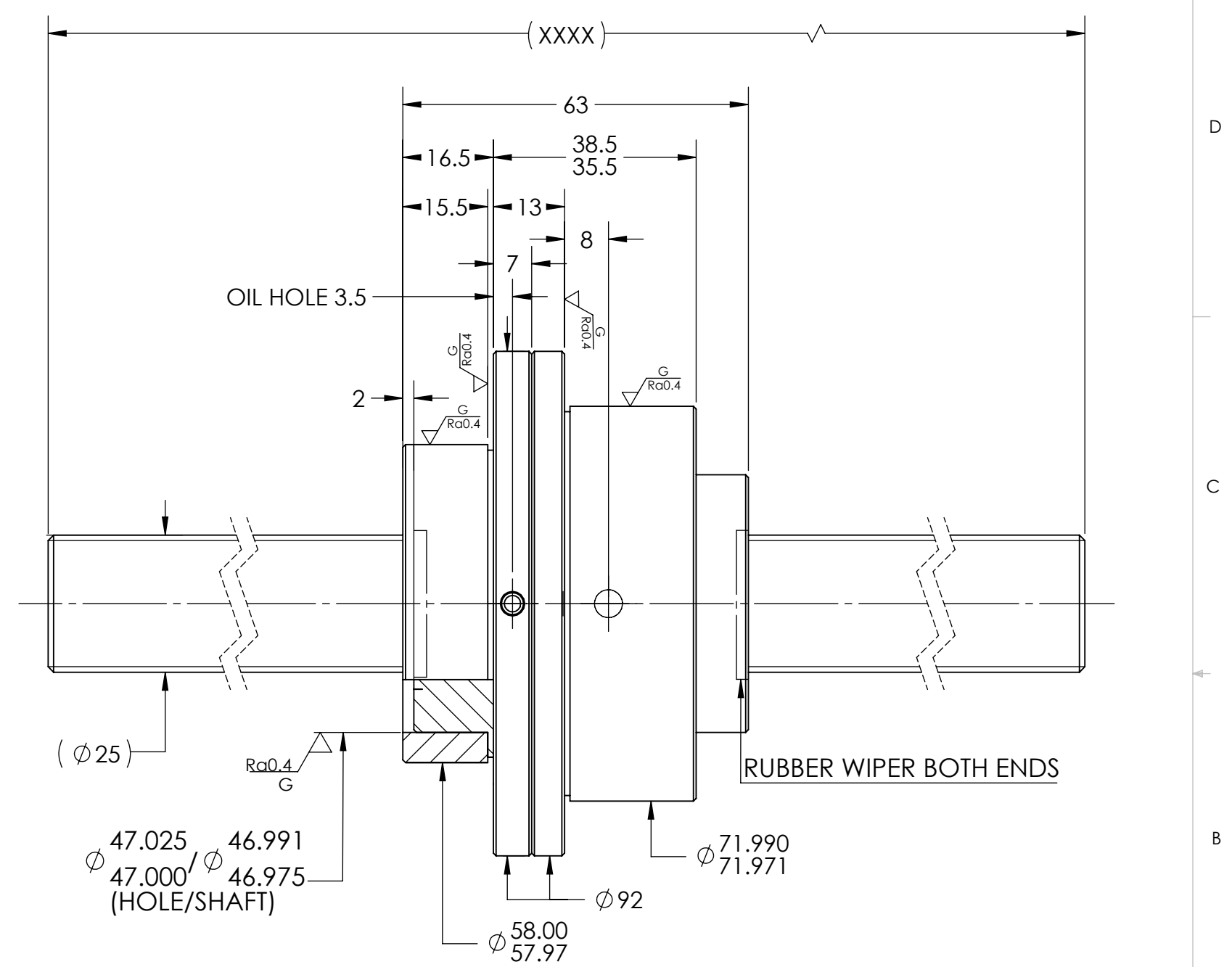
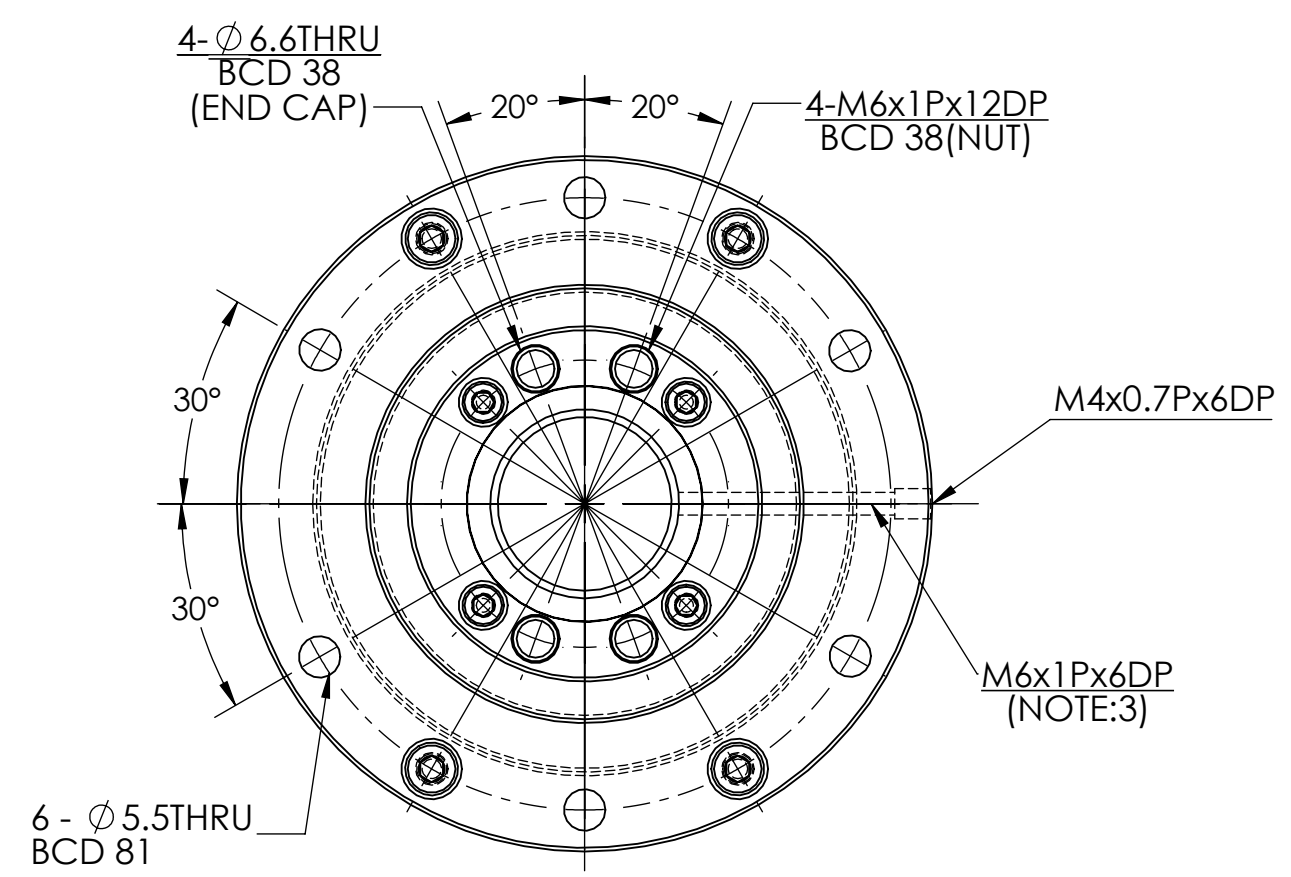


UNCONTROLLED IF PRINTED

$\sqrt{Ra6.3}$ ($\sqrt{Ra0.4}$)

D
C
B
A



DYNAMIC (BEARING) (kgf)	1946	BREAK SHARP EDGES UNLESS OTHERWISE SPECIFIED									
STATIC (BEARING) (kgf)	3036	ROUGH M/C	FIT M/C	GRD		MATERIAL	SHAFT:CF53/Equiv. NUT:SNM220/Equiv.				
PRELOAD(kgf)	~	6.3 a	1.6 a	0.4 a		THREAD BALL TRACK	HRC 56~62				
R.D.	21.974	TOLERANCE mm									
S.F. (kgf)	~	UP	6	30	120	300	600	1200	2400	2400	
DRAG TRQ(kgf-cm)	~	TO	6	30	120	300	600	1200	2400	OVER	
TURN DIRECTION	R	± 0.1		± 0.2		± 0.3		± 0.4		± 1.5	
P.C. DIA.	26.03	DATE		INITIALS		HIWIN CORPORATION 12455 Jim Dhamer Dr, Huntley, IL 60142					
BALL DIA.	3.969	DRAWN	11/15/2022	D.W.		TITLE: STANDARD STOCK BALLSCREW					
BACKLASH	0.04 MAX	CHECKED	02/01/2023	T.C.		PART NUMBER: 4R25-25S2-DFSHR1NW-XXXX-XXXX-0.05					
CIRCUIT	1.8*2	MFG APPR.	02/01/2023	A.H.		SIZE DWG. NO. REV SCALE B W-SBS-25-25-A01 N/C 1:1					
LEAD ANGLE	17										
DYNAMIC (kgf)	1300	v300p: 0.05									
STATIC (kgf)	3600	ep: 0.750									
LEAD/PITCH	25/6.25										

HIWIN CONFIDENTIAL

8 7 6 5 4 3 2 1