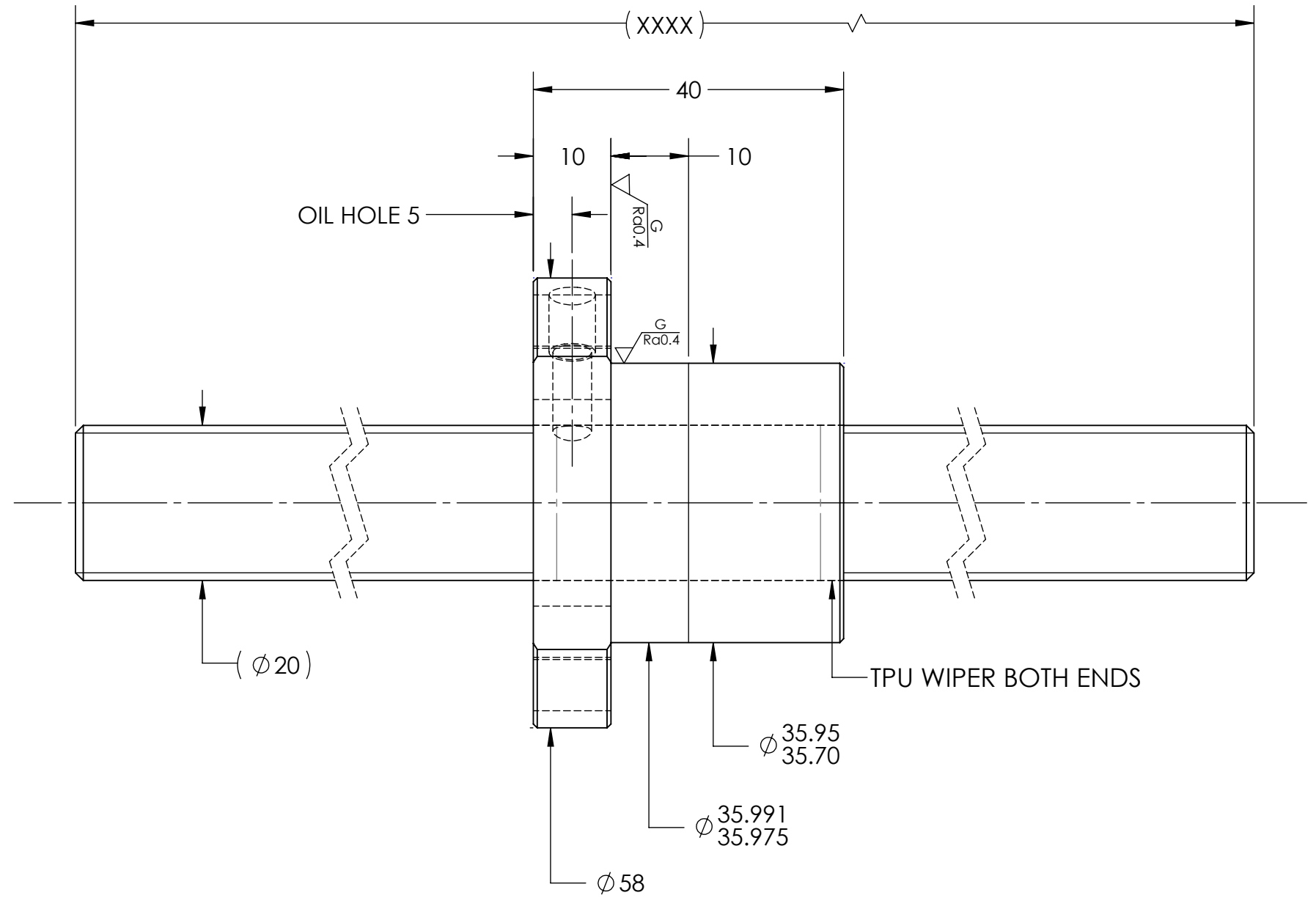
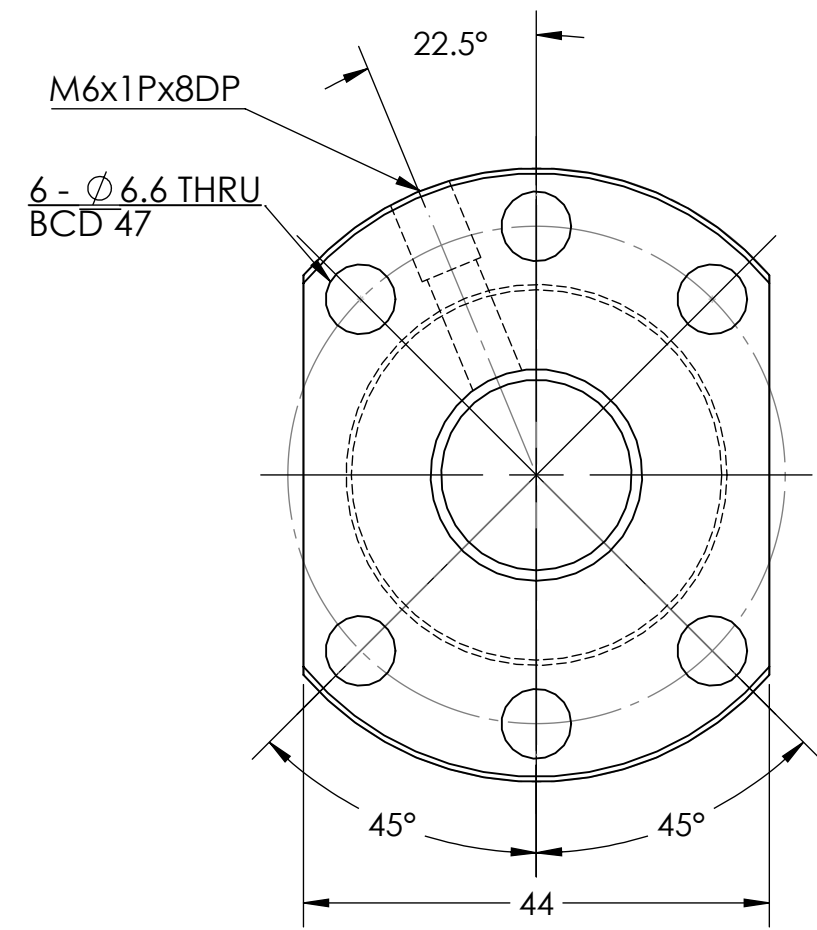


UNCONTROLLED IF PRINTED

$\sqrt{Ra6.3}$ $\left(\sqrt{\frac{G}{Ra0.4}}\right)$



BREAK SHARP EDGES UNLESS OTHERWISE SPECIFIED

ROUGH M/C	FIN M/C	GRD		MATERIAL	SHAFT:CF53/Equiv. NUT:SNM220/Equiv.					
$\sqrt{Ra25}$	$\sqrt{Ra6.3}$	$\sqrt{Ra0.4}$		THREAD BALL TRACK	HRC 56~62					
TOLERANCE mm										
UP	6	30	120	300	600	1200	2400	2400	OVER	
TO	6	30	120	300	600	1200	2400	2400	OVER	
TURN DIRECTION	R	± 0.1	± 0.2	± 0.3	± 0.4	± 0.5	± 0.8	± 1.0	± 1.5	
P.C. DIA.	19.92	DATE	INITIALS	HIWIN CORPORATION 12455 Jim Dhamer Dr, Huntley, IL 60142						
BALL DIA.	3	DRAWN	11/21/2022							D.W
BACKLASH	0.03 MAX	CHECKED	01/18/2023							T.C.
CIRCUIT	4	MFG APPR.	01/18/2023							A.H
LEAD ANGLE	4.57				TITLE: STANDARD STOCK BALLSCREW					
DYNAMIC (kgf)	1500				PART NUMBER: R20-5K4-FSCEW-XXXX-XXXX-0.05					
STATIC (kgf)	2930	SIZE	DWG. NO.	REV	SCALE	NTS				
LEAD	5	v300p:	B	W-SBS-20-5-A03	N/C					

HIWIN CONFIDENTIAL