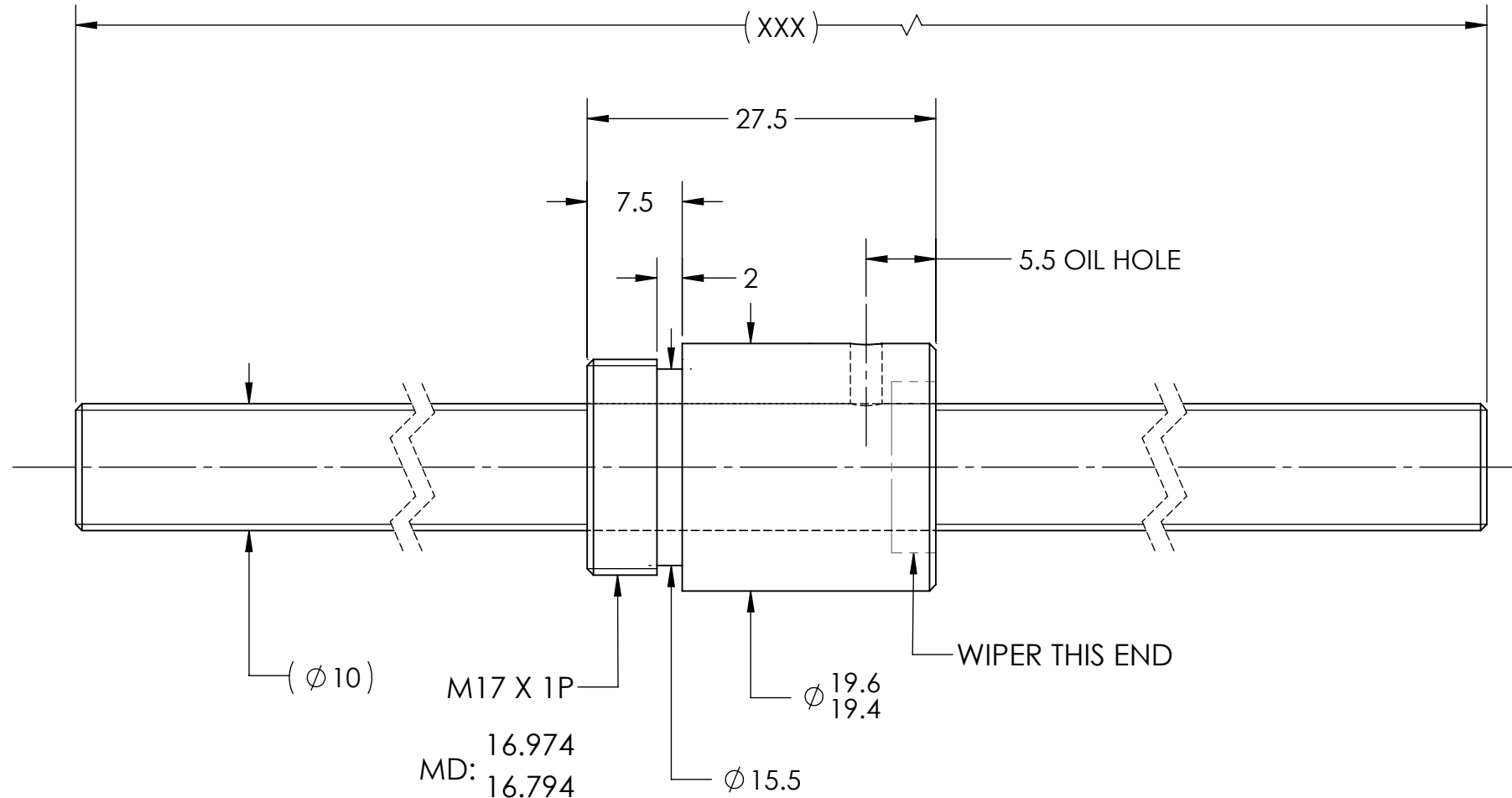
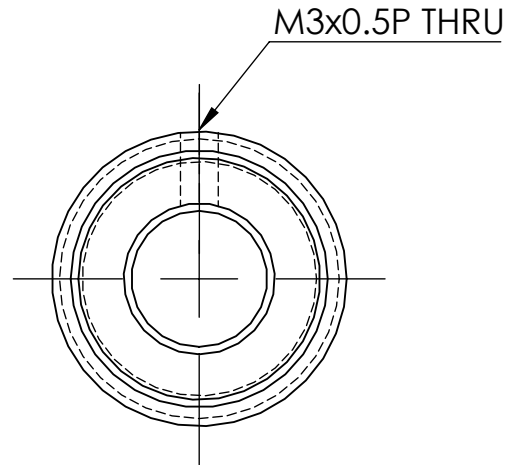
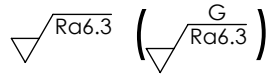


UNCONTROLLED IF PRINTED



MD: 16.974  
16.794  
PD: 16.324  
16.206

BREAK SHARP EDGES UNLESS OTHERWISE SPECIFIED

PRELOAD(kgf)	~	ROUGH M/C	FIN M/C	GRD		MATERIAL	SHAFT:CF53/Equiv. NUT:SNM220/Equiv.				
R.D.	8.136	$\sqrt{Ra25}$	$\sqrt{Ra6.3}$	$\sqrt{Ra0.4}$		THREAD BALL TRACK	HRC 56~62				
S.F. (kgf)	~	TOLERANCE mm									
DRAG TRQ(kgf-cm)	~	UP	6	30	120	300	600	1200	2400	2400	OVER
TURN DIRECTION	R	TO	6	30	120	300	600	1200	2400	2400	OVER
			± 0.1	± 0.2	± 0.3	± 0.4	± 0.5	± 0.8	± 1.0	± 1.5	
P.C. DIA.	10.2	DATE	INITIALS	HIWIN CORPORATION 12455 Jim Dhamer Dr, Huntley, IL 60142							
BALL DIA.	2	DRAWN	09/30/2022	D.W	TITLE: <b>STANDARD STOCK BALLSCREW</b> PART NUMBER: <b>R10-2.5B1-RSZ-XXX-XXX-0.05</b>						
BACKLASH	0.02 MAX	CHECKED	01/17/2023	T.C.							
CIRCUIT	2.6*1	MFG APPR.	01/17/2023	A.H							
LEAD ANGLE	4.46										
DYNAMIC (kgf)	370	v300p: 0.05			SIZE	DWG. NO.	REV	SCALE	NTS		
STATIC (kgf)	700				B	W-SBS-10-2.5-A01	N/C				
LEAD	2.5										

HIWIN CONFIDENTIAL