

1 A142P1A1

2 More Confidential

3 $\sqrt{Ra6.3}$ ($\sqrt{Ra0.4}$)

A

B

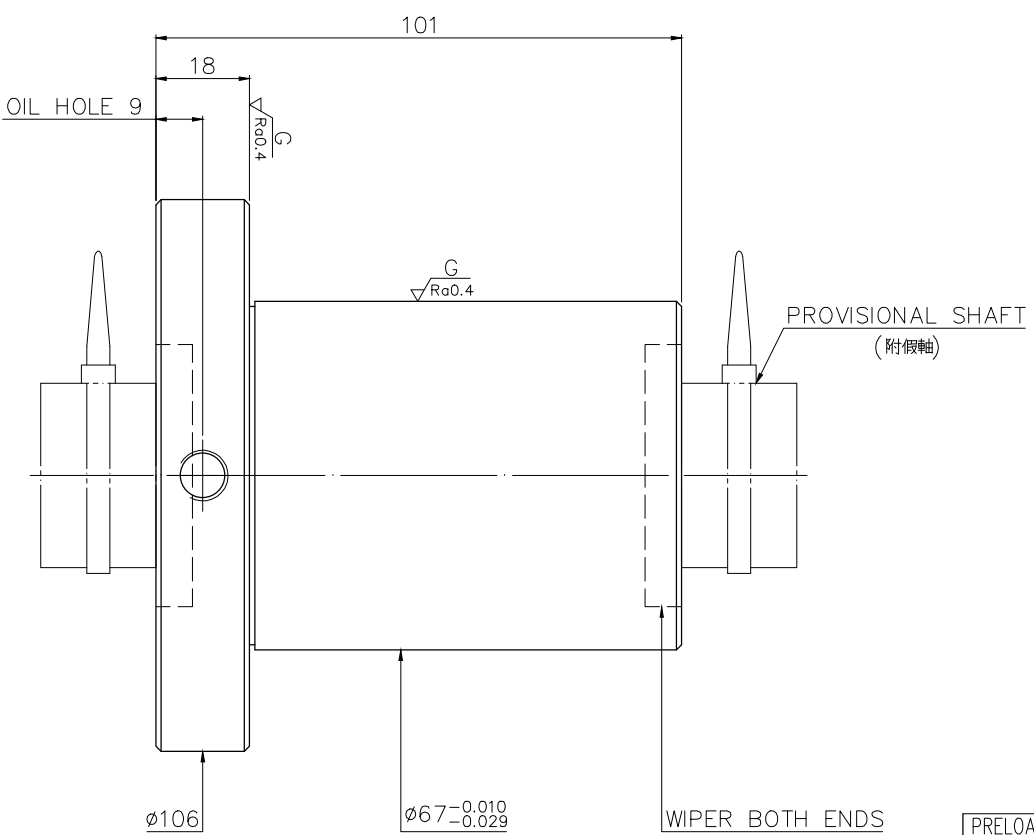
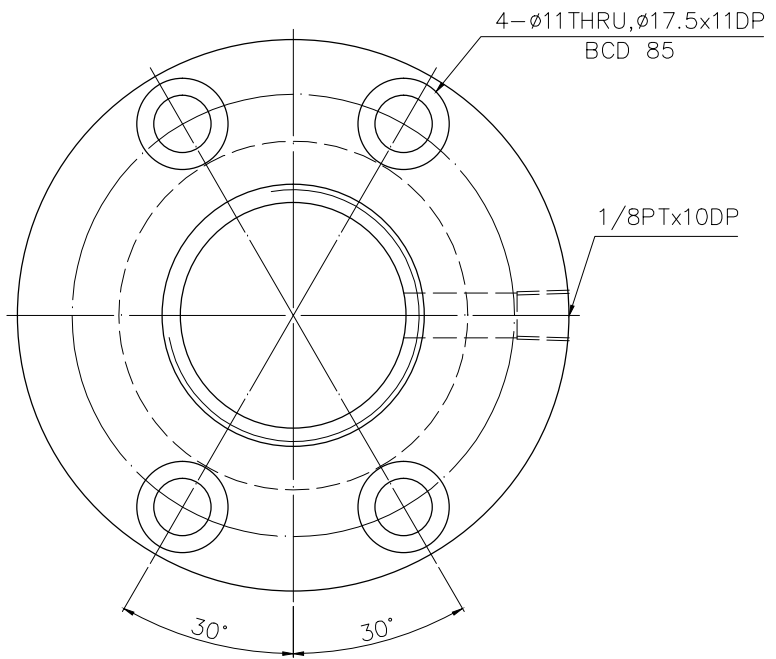
C

D

E

F

G



PRELOAD(kgf)	~
R.D.	~
S.F. (kgf)	~
DRAG TORQUE(kgf-cm)	~
DIRECTION OF TURN	R
P.C. DIA.	41.9
BALL DIA.	6.35
BACKLASH	0.07MAX
CIRCUIT	4
LEAD ANGLE	16.9
DYNAMIC (kgf)	4350
STATIC (kgf)	12530
LEAD/PITCH	40/20

SPEC: 4R40-40K4-DFSC

MAX. AXIAL LOAD (kgf)		LUBRICATION		BALL DIA.	6.35
MAX. ROTATIONAL SPEED (rpm)		SPACE BALL		BACKLASH	0.07MAX
DN VALUE		E1 TYPE ASSEMBLY METHOD		CIRCUIT	4
MAX. FEED RATE (m/min)		CUSTOMER DRAWING NO.		LEAD ANGLE	16.9
ACCELERATION (m/sec ²)		CUSTOMER MC TYPE		DYNAMIC (kgf)	4350
SUPPORT METHOD		CUSTOMER AXIAL TYPE		STATIC (kgf)	12530
		端塞型式		LEAD/PITCH	40/20
				不出牙	

	UNCHAMFERED USE <input type="checkbox"/> CO.5 <input checked="" type="checkbox"/> C1 <input type="checkbox"/> C SCALE 1: X MAT. SH: ROLLED DATE 2021.07.15 INT: SNCM220/Equivalent DWG Hanna THREAD BALL TRACK CHK Sting HRC 56 ~ 62 APPD Shower
	CUSTR H-CHICAGO DWG.NO. A142P1A1

*BREAK SHARP EDGE UNLESS OTHER SPECIFIED.
*未量倒角者去毛邊 (CO.2MAX)
● THREAD END ALLOWS ABOVE LENGTH OUT OF HARDNESS TOLERANCE.

DATE	MODIFICATION	APPROVED
------	--------------	----------

* PLEASE IGNORE CHINESE CHARACTERS WHICH ARE FOR OUR REFERENCE ONLY.

