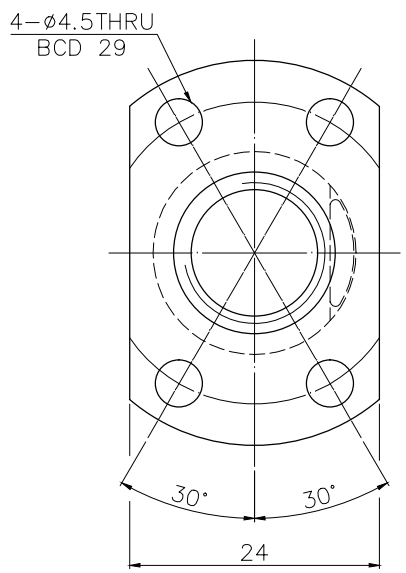
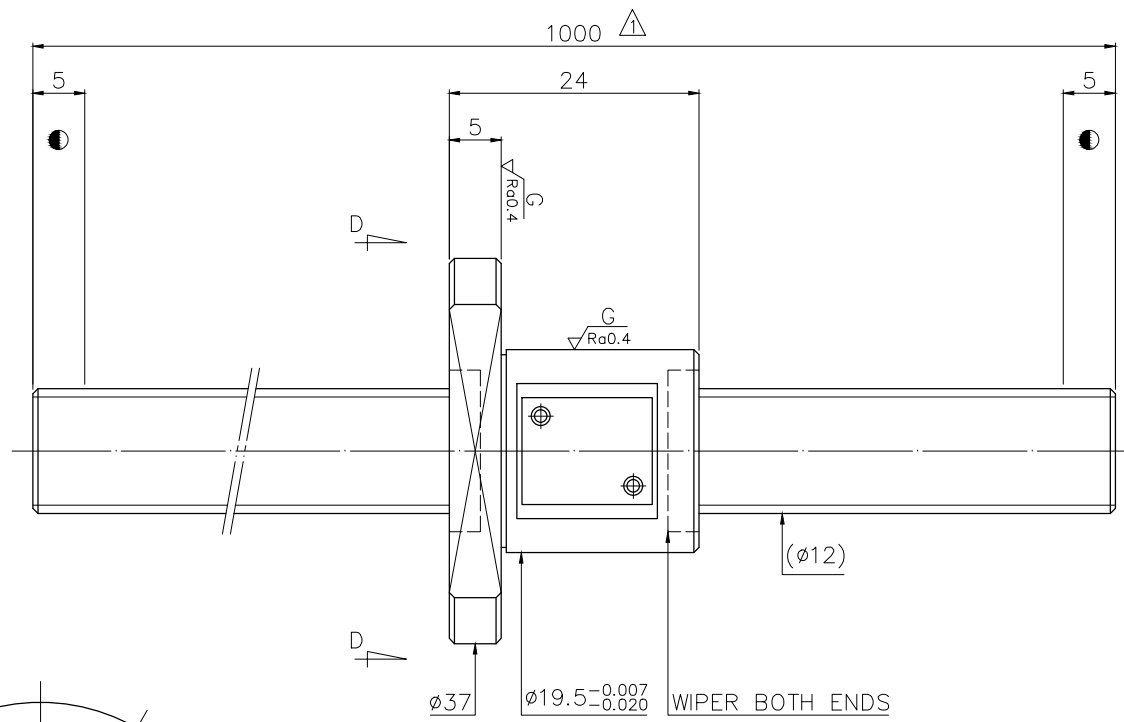


A141M5A2

More Confidential

$\sqrt{Ra6.3}$ ($\sqrt{Ra0.4}$)



D-D VIEW

PRELOAD(kgf)	~
R.D.	10.408
S.F. (kgf)	~
DRAG TORQUE(kgf-cm)	~
DIRECTION OF TURN	R
P.C. DIA.	11.97
BALL DIA.	1.5
BACKLASH	0.01MAX
CIRCUIT	3.6*1
LEAD ANGLE	3.04
DYNAMIC (kgf)	370
STATIC (kgf)	870
LEAD	2

SPEC: R12-2C1-FSZ-1000-1000-0.05

MAX. AXIAL LOAD (kgf)		LUBRICATION		BALL DIA.	1.5
MAX. ROTATIONAL SPEED (rpm)		SPACE BALL		BACKLASH	0.01MAX
DN VALUE		EI TYPE ASSEMBLY METHOD		CIRCUIT	3.6*1
MAX. FEED RATE (m/min)		CUSTOMER DRAWING NO.		LEAD ANGLE	3.04
ACCELERATION (m/sec ²)		CUSTOMER MC TYPE		DYNAMIC (kgf)	370
SUPPORT METHOD		CUSTOMER AXIAL TYPE		STATIC (kgf)	870
				LEAD	2

THREAD LENGTH 	UNCHAMFERED USE	<input checked="" type="checkbox"/> C0.5	<input type="checkbox"/> C1	<input type="checkbox"/> C	MAT. SH:CF53/Equivalent DATE 2021.04.30 INT:SNCM220/Equivalent DWG Hani						
	ROUGH M/C/FIN M/C/GRD	<input checked="" type="checkbox"/> $\sqrt{Ra25}$	<input checked="" type="checkbox"/> $\sqrt{Ra6.3}$	<input checked="" type="checkbox"/> $\sqrt{Ra0.4}$		SCALE 1: X					
	NORMAL TOLERANCE mm				THREAD BALL TRACK CHK Shower						
	UP TO	6	30	120	300	600	1200	2400	OVER 2400	HRC 56 ~ 62	APPD Sting
		±0.1	±0.2	±0.3	±0.4	±0.5	±0.8	±1.0	±1.5		
	$\epsilon/300p$:	0.05									
	ϵp :	0.167									
		CUSTR H-CHICAGO DWG.NO. A141M5A2									

*BREAK SHARP EDGE UNLESS OTHER SPECIFIED.
 *未量倒角者去毛邊 (CO.2MAX)
 * THREAD END ALLOWS ABOVE LENGTH OUT OF HARDNESS TOLERANCE

2021.04.30	MOD.	Sting
DATE	MODIFICATION	APPROVED

* PLEASE IGNORE CHINESE CHARACTERS WHICH ARE FOR OUR REFERENCE ONLY.