

1 A12Z0HA1

2 More Confidential

3 ∇V (∇VV)

A

B

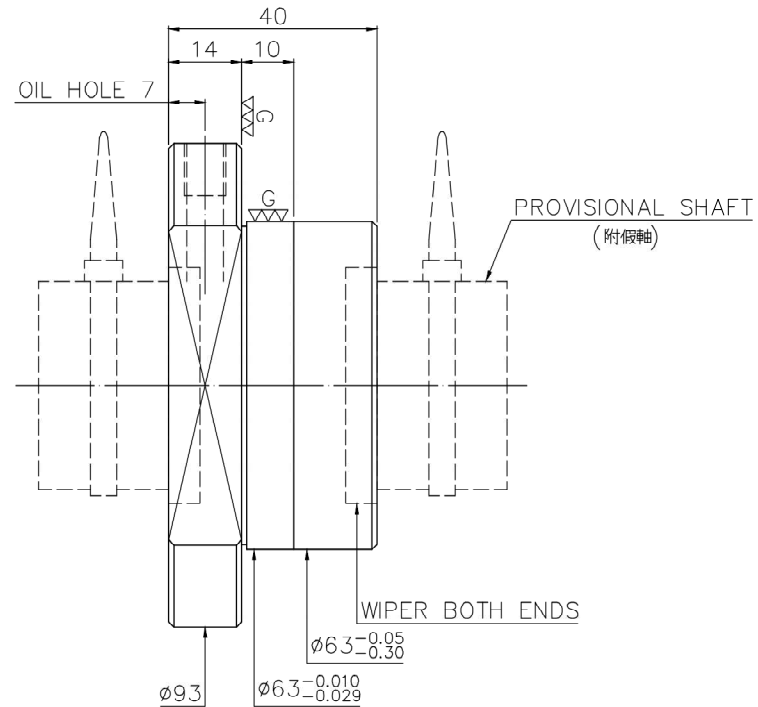
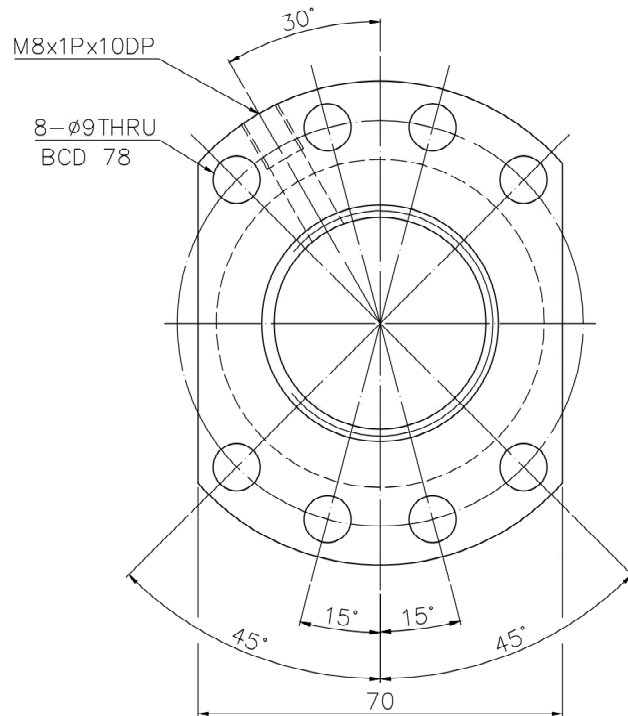
C

D

E

F

G



PRELOAD(kgf)	~
R.D.	~
S.F. (kgf)	~
DRAG TORQUE(kgf-cm)	~
DIRECTION OF TURN	R
P.C. DIA.	40.03
BALL DIA.	3.175
BACKLASH	0.04MAX
CIRCUIT	4
LEAD ANGLE	2.28
DYNAMIC (kgf)	2240
STATIC (kgf)	6590
LEAD	5

SPEC: R40-5K4-FSC

MAX. AXIAL LOAD(kgf)	LUBRICATION	BALL DIA.	3.175
MAX. ROTATIONAL SPEED (rpm)	SPACE BALL	BACKLASH	0.04MAX
DN VALUE	E1 TYPE ASSEMBLY METHOD	CIRCUIT	4
MAX. FEED RATE(m/min)	CUSTOMER DRAWING NO.	LEAD ANGLE	2.28
ACCELERATION(m/sec ²)	CUSTOMER MC TYPE	DYNAMIC (kgf)	2240
SUPPORT METHOD	CUSTOMER AXIAL TYPE	STATIC (kgf)	6590
		LEAD	5

UNCHAMFERED USE <input type="checkbox"/> CO.5 <input checked="" type="checkbox"/> C1 <input type="checkbox"/> C	SCALE	MAT.	SH: ROLLED	DATE	2015.09.07
ROUGH M/C FIN M/C GRD ∇ 25° 6.3 _a 0.4 _a ∇VV	1: X	INT: SNCM220/Equivalent	DWG	Rita	
NORMAL TOLERANCE mm		THREAD BALL TRACK	CHK	Ella	
UP TO 6 30 120 300 600 1200 2400 OVER	±0.1 ±0.2 ±0.3 ±0.4 ±0.5 ±0.8 ±1.0 ±1.5	HRC 56 ~ 62	APPD	Michelle	
HIWIN BALLSCREWS		CUSTR	HIWIN STD.		
		DWG.NO.	A12Z0HA1		

*BREAK SHARP EDGE UNLESS OTHER SPECIFIED.
*未量倒角者去毛邊 (CO.2MAX)
● THREAD END ALLOWS ABOVE LENGTH OUT OF HARDNESS TOLERANCE.

DATE	MODIFICATION	APPROVED

機密級 More Confidential
* PLEASE IGNORE CHINESE CHARACTERS WHICH ARE FOR OUR REFERENCE ONLY.